



GIBRALTER

Date of Birth: 03/24/1992
 Registration 1: S6375



Courtesy of DCCI

TTT: 91.0000 on 11/17/2004



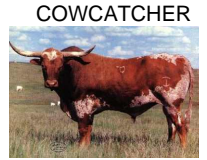
GIBRALTER



SENATOR



OVERWHELMER



COWCATCHER



DOHERTY 698



CLASSIC

ALMA II



CLASSIC

Miss Redmac 131



MEASLES' SUPER RANGER



DOHERTY 698

Classic Reflection

CLASSIC MAC

Measles Supreme

Valentine



<http://www.hiredhandsoftware.com>